



B U S I N E S S
Excellence
A W A R D S

جوائز
التميز لقطاع
الاعمال



برنامج دبي للخدمة المتميزة
DUBAI SERVICE EXCELLENCE SCHEME



جائزة دبي للجودة
DUBAI QUALITY AWARD



جائزة دبي للتنمية البشرية
DUBAI HUMAN DEVELOPMENT AWARD

Business Excellence Awards (DQA/DHDA Awards)

Scorecard Benchmarking Reports

&

Self-Assessment Module

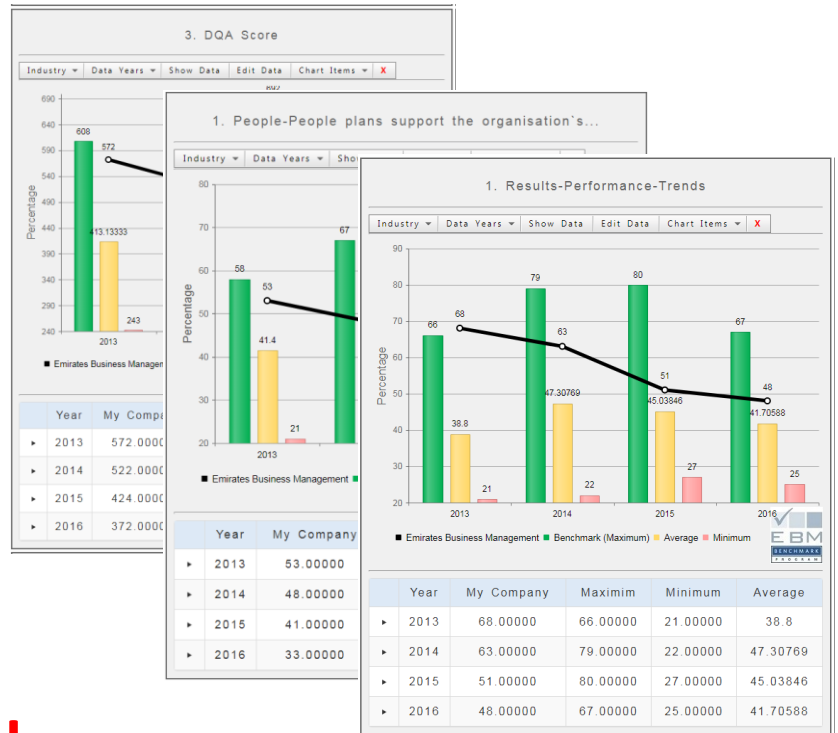


The BED - EBM Benchmarking Program brings to you EBM-BM DQA & DHDA Scorecard Benchmarking Over 450 Reports! For **AED 4,000/-**

- + DQA Score
- + Enablers
- + Results
- + Leadership
- + Strategy
- + People
- + Partnerships and Resources
- + Processes, Products & Services
- + Customer Results
- + People Results
- + Society Results
- + Business Results

A Snapshot of Types of Scorecard Reports:

- Scorecard benchmarking reports for DQA Applicants 2013 to date
- Scorecard benchmarking reports for DHDA Applicants from 2013 to date
- BED-EBM Benchmarking Overall Scores for DQA / DHDA
- BED-EBM Benchmarking Scores for all Enablers&Results
- BED-EBM Benchmarking Scores for all sub-criteria
- BED-EBM Benchmarking Scores for all Criteria Guideline points
- BED-EBM Benchmarking Scores by RADAR elements
- BED-EBM Benchmarking Scores by RADAR attributes

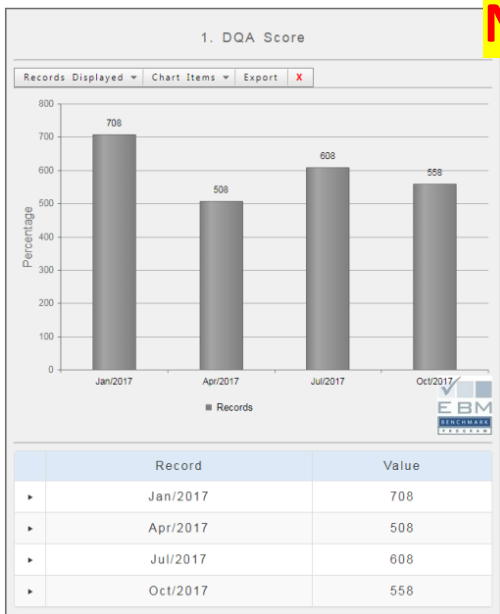


Self-Assessment Module

For **AED 3,000/-**

Special discounted price for

New Applicants (SA): **AED 2,000/-**



Scorecard + Self-Assessment

Only AED 5,000/-

For more details, contact:

Ms. Seema / Ms. Aisha
Business Excellence Department,
Dubai
Emails: seema1@dubaided.gov.ae,
aisha.altenaiji@dubaided.gov.ae
Tel: 04-4455876 / 04-4455806

Ms.Indu / Ms. Clarice
Emirates Business Management
International Consultants
Emails: indu@ebm-international.com,
clarice@ebm-international.com
Tel: 04-2234787 / 04-2237270

These products are for you, if you are:

- Top, Senior and Middle Management personnel from Corporates of any size and any industry, whether government or private sector.
- Management Representatives seeking to implement Business Excellence Models in their company.
- Management Representatives seeking to evaluate and benchmark their own company's performance as against those of Award Applicants of past years.
- From amongst those who will aspire to adopt the practices of Business Excellence within their respective work domains.